



Early Childhood News

March – May 2007

Early Childhood Connections



Join Our Blue Ribbon Campaign for Child Abuse Awareness Month

On Saturday, February 10, 2007 the Rapid City Journal reported that in the past few years, Rapid City has had about the same number of child abuse and neglect cases as a major city. In 1996 the 7th Circuit had 156 children involved in child abuse or neglect cases and in 2006 that number had risen to 742.

April is Child Abuse Awareness Month. This year Black Hills Association for the Education of Young Children (BHAEYC) and Early Childhood Connections are co-sponsoring the "Blue Ribbon Campaign". Last year, with the help of many of you, we distributed 2500 blue ribbons and brochures on child abuse

prevention to families throughout our region.

During the past several years, the blue ribbon has been widely recognized as a national symbol of child abuse awareness. This movement began in the spring of 1989, when a concerned grandmother, Bonnie Finney, took a stand against child abuse after experiencing the death of her grandson. She tied a symbolic blue ribbon to her van as a signal to her community of her personal commitment to involve everyone in the battle to stop child abuse. Why the color blue? Bonnie Finney said, "I never intend to forget the battered, bruised bodies of my grandchildren. Bruises are black, then eventually blue."

The spirit of her blue ribbon has grown and the blue ribbon now symbolizes the more than 3.2 million abused children reported each year to Child Protective Services (CPS).

If you are interested in receiving ribbons to distribute to your families, church or other organizations, contact Kim Booth at Early Childhood Connections, kimbooth@rushmore.com or 342-6464. Please join the fight against child abuse and raise awareness about child abuse prevention by wearing a blue ribbon during the month of April...give one to your friends...tell them what it means...you may make a difference in a child's life!

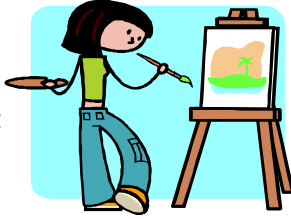
Our Mission:

To enrich the lives of children by working with the adults who affect their lives-parents, caregivers, and educators.

Early Childhood Connections is proud to be Western South Dakota's Early Childhood Enrichment Provider.

Attention: All Young Artists

Early Childhood Connections is calling on all young artists to submit paintings, drawings, sculptures, collages, etc. for an art exhibit celebrating the Week of the Young Child. The art will be on display during ECC's open house on Thursday, April 26, 2007, from 3:30 pm to 7:30 pm. Please label all creations with first name and age on the back. Each Family Child Care Provider, Group Family Child Care, and Child Care Center that submits entries will be entered into a drawing to receive an art basket full of goodies.



Play and Learn Lending Library

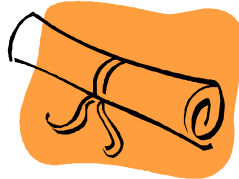
For those who are enrolled in the Play and Learn Lending Library, we ask that you please take a few minutes to go through the inventory list before Debbie comes to pick-up the tub. Not only is it extremely difficult for us to retrieve and/or replace missing items, but also it is disappointing to the next provider who gets the tub. If you have any questions, please call Debbie at 342-6464.

Do you have an E-mail Address?

The ECC newsletter is sent out 4 times per year and normally we send over 600 hard copies through the mail. If you would like to receive the ECC newsletter by email, please call the office at 342-6464 or email Bill at bschuler@rushmore.com.

Congratulations!!

Abby Karn recently received her CDA credential. Congratulations on this achievement and all of your hard work! If you are interested in receiving information on the Child Development Associate Credential, you can contact Kim Booth at kimbooth@rushmore.com or at 342-6464.



Holiday Closings

The ECC office will be closed on the following day:

May 28, 2007 Memorial Day

Our normal business hours are:
Monday through Thursday 8 am to 5 pm
Friday 8 am to 4 pm
We are also closed from 12pm to 1 pm for the lunch hour.

Social Emotional Foundation of Early Learning

This is a 6-week series focusing on promoting children's social and emotional development and addresses the challenging behaviors and mental health needs of children in childcare. The class will run on Thursday nights from 6:30 - 9:00 April 12, 19, May 3, 10, 17, and 24. This series will include the option of 1.5 CEU credit. The fee is \$30.00 for the entire series and \$10.00 per CEU. Several topics will be covered, including:

- Building positive relationships with children, families and colleagues.
- Designing environments, schedules, and routines
- Establishing rules
- Implementing activities that promote child engagement
- Modifying and adapting materials and activities to meet the individual needs of all children, including those with disabilities
- Providing encouragement and positive feedback to children
- Identifying teachable moments
- Facilitating the development of friendships skills
- Teaching problem solving
- Teaching children to recognize and express emotions
- Teaching anger management



Family Child Care Professionals
of South Dakota, Inc.

Growing
Together

Hand In Hand

A Conference for Parents and Child Care Providers



May 5, 2007

Cedar Shore Resort, Chamberlain, SD

Do It Yourself Learning: Building Toys and Equipment
Red Flags and Warning Signs of Developmental Delay
Eliminating Negative Behaviors
Avoiding Stress and Burnout
And Many More

info@sdfcc.org sdfcc.org 605-342-0573
530 Berry Boulevard, Rapid City, SD 57702

Spring is Coming! Buzz, Buzz Like a Bee

Toddlers love pretend play and using their imaginations. This is a great springtime activity suggested in the resource book "Toddlers Together" by Karen Theusen. The activity encourages creative thinking, motor development and requires no materials! Encourage the toddlers to squat down near you. Tell them you are the queen bee and they are your helpers in the hive. Make buzzing sounds and have the "bees" fly in little circles walking on their tiptoes around the room looking for beautiful flowers. Squat down to land on a flower and pretend to taste the nectar. Tell the toddlers it is time to fly back to the hive. Fly around the room in circles on tiptoes making buzzing sounds again. "Land" back in the hive to end the activity. If you would like to extend the activity you can add paper flower shapes cut out of felt or construction paper on the floor for the children to land on.

Building Positive Teacher-Child Relationships

Developed by the Center on the Social and Emotional Foundations for Early Learning

Positive teacher-child relationships are important because:

- ü They influence a child's emotional, cognitive, and social development
- ü They help children develop secure relationships with other adults
- ü They help children develop good peer relationships
- ü They help reduce the frequency of behavior problems
- ü They help children develop positive self-esteem
- ü They can result in higher rates of child engagement

When interacting with young children, remember to:

- ü Engage in one-to-one, face-to-face interactions
- ü Get on the child's level for face-to-face interactions
- ü Use a pleasant, calm voice and simple language while making eye contact
- ü Provide warm, responsive physical contact
- ü Follow the child's lead and interest during play
- ü Help children understand classroom expectations
- ü Redirect children when they engage in challenging behavior
- ü Listen to children and encourage them to listen to others
- ü Acknowledge children for their accomplishments and effort
- ü Positive teacher-child relationships include:
 - ü Consideration of the individual needs and interaction styles of young children
 - ü Consideration of the children and families' cultural, linguistic and ethnic background.

Celebrate the Week of the Young Child

The Week of the Young Child is an annual celebration sponsored by the National Association for the Education of Young Children (NAEYC), the world's largest early childhood education association, with nearly 100,000 members and a network of over 300 local, state, and regional Affiliates. This year we celebrate it April 22 – 28, 2007.

The purpose of the Week of the Young Child is to focus public attention on the needs of young children and their families and to recognize the early childhood programs and services that meet those needs.

NAEYC first established the Week of the Young Child in 1971, recognizing that the early childhood years (birth through age 8) lay the foundation for children's success in school and later life. The Week of the Young Child is a time to plan how we--as citizens of a community, of a state, and of a nation--will better meet the needs of all young children and their families.

The Week of the Young Child is a time to recognize that children's opportunities are our responsibilities, and to recommit ourselves to ensuring that each and every child experiences the type of early environment--at home, at child care, at school, and in the community--that will promote their early learning.

As you plan your events, visit www.naeyc.org/woyc for ideas and strategies.



Missing Glo Germ Kit

Early Childhood Connections is desperately seeking our missing Glo Germ Kit. It is in a plastic container tub and includes special soap, and a black light to search for germs still on your hands even after washing. If you have this kit or possibly know where we can find it, please let us know! This kit is a wonderful training tool and we would love to use it again!

Child Care Providers Day



[PROVIDER APPRECIATION DAY](http://www.appreciationday.org)

May 11, 2007 is National Provider Appreciation Day and we at Early Childhood Connections would like to take this opportunity to thank you for all that you do for the young children of South Dakota. Your dedication, energy and love for the children you care for deserves a special day of thanks! For more information you can visit www.appreciationday.org.

Summer SDCDA Classes!

Early Childhood Connections will now offer the opportunity to start working toward your CDA Credential this summer. In an effort to meet the needs of the providers in Region I, Early Childhood Connections will for the first time be offering a summer session of SDCDA training classes in Rapid City. The classes will be on Tuesday evenings from 6:30 PM – 9:00 PM. This SDCDA course will begin June 5, 2007 and run through February 2008. We will continue to offer Saturday classes and Monday evening classes in Rapid City that begin in September and run through May. We will also still allow students to join in these classes in January.

Completing CDA training and applying for CDA assessment is a **big** commitment. It is, however, a very rewarding experience. It offers you, as a caregiver of young children, an opportunity to look at your own work in relation to national standards, receive support and mentoring from people who have experience with children and knowledge about early childhood education while improving your skills in ways that are satisfying to you and the children in your care. All this while you work towards a professional Credential that is recognized by early childhood educators nationwide.

The South Dakota Child Development Associate Training is designed to meet the 120 clock hours of training to meet the requirements to apply for CDA Assessment. Once you have obtained the CDA Credential from the Council for Professional Recognition you qualify as a Level III provider on the SD Pathways Career Lattice.

Scholarships to cover a portion of the training cost are available through the Office of Child Care Services. For more information or to request scholarship application forms you can contact Kim Booth at kimbooth@rushmore.com or call Kim at Early Childhood Connections 1-888-999-7759 or 342-6464.

SIDS Update

SIDS – sudden infant death syndrome- is still the leading cause of death of infants over one month of age and under one year of age. There have been many risk factors for SIDS identified through research but only recently has there been a biological cause identified for SIDS. Drs. Hannah Kinney and David Paterson at Children's Hospital Boston have identified an area at the lowest part of the brainstem as having abnormalities in the nerve cells that make and use serotonin. Serotonin is important in the transmitting of messages from one nerve cell to another. The brainstem has always been known as being the area where breathing is regulated. The next step of reducing SIDS deaths will be to develop a test to identify those infants at risk of SIDS due to having the abnormality of the message transmission in the brainstem.

The occurrence of SIDS used to be associated more with night-time hours and during the winter/early spring months. More recently, there are a number of SIDS deaths during the daytime hours and during all months of the year. With a greater percentage of children in child-care, there is a likelihood of an infant dying of SIDS in a childcare setting. If you are caring for children under one year of age, take precautions to reduce the chance of SIDS. These precautions include: **only placing infants on their backs when sleeping** (placing on the side has an increased risk of SIDS), **placing infants on a firm mattress to sleep** (never on a waterbed, sofa, adult bed, or sheepskin), **avoid pillows and fluffy blankets and stuffed toys in the sleeping area, avoid overheating by keeping the sleeping room cooler and avoiding many layers of covers, avoid second hand smoke** (second hand smoke exposure doubles the risk for SIDS) and **put your baby to sleep with a pacifier during the first year of life.**

There are many resources for information on SIDS. A few of the websites where you will find information include www.kidshealth.org, www.cjsids.com, and www.aap.org.

Baby's First Ride Home!

Are you expecting a baby? Are you concerned about getting your car seat installed correctly? Early Childhood Connections is offering free "newborn only" car seat classes for expectant parents. A certified technician will inspect your seat to be sure it is appropriate, offer advice for positioning the newborn, and will help you get the car seat installed correctly in your vehicle. You may be eligible for a seat through Project 8 <http://www.state.sd.us/project8/default.htm> if you meet the guidelines. Call early to sign up for a "newborn only" car seat training prior to your due date. Class size is limited. 342-6464

Understanding Fetal Alcohol Spectrum Disorder (FASD)

The effects of FASD in children are often compared to an iceberg. The majority of the effects are largely unseen to the eye, however its effects are felt very deeply by the children affected and those that care for them. Terri Murray from Behavior Management will be presenting a two-part training on Fetal Alcohol Spectrum Disorder on April 24th and May 1st. Understanding the effects to the children, their experience, and practical ways for caretakers to address their needs will be accomplished by answering the following questions, whether FASD is formally diagnosed or suspected:

- What are the permanent changes in the brain and the behavior that results?
- How are the effects seen in development and in real life, every day situations?
- What is the experience of the child?
- What can caretakers do to ease the child's, and their own, stress and struggles?

Early Childhood Connections Training Calendar

| Date | Day | Location | Class Description | Time | Cost |
|------|-----|----------|-------------------|------|------|
|------|-----|----------|-------------------|------|------|

Please note: Classes will be canceled or rescheduled if enrollment does not include 6 participants on the day before or of the class

| Infant and Child CPR Training <i>Pathways: CPR</i> This introductory course includes First Responder information and hands-on experience with CPR mannequins required for Red Cross Certification. (Adult training available by request.) **Payment for CPR classes must be made at the time of registration. If you register by e-mail or telephone, payment will need to be received in our office within 3 business days from the day your registration was received. | | | | | |
|---|-------|-----------|---|----------------|------|
| April 9 | Mon. | ECC | Infant & Child Instructor: Greg Hilt | 6:30 – 9:00 pm | \$20 |
| April 17 | Tues. | Spearfish | Infant & Child Instructor: Jennifer Nelson | 6:30 – 9:00 pm | \$20 |
| April 17 | Tues. | ECC | Infant and Child Instructor: Kelie Willson | 6:30 – 9:00 pm | \$20 |
| April 30 | Mon. | ECC | Infant & Child Instructor: Greg Hilt | 6:30 – 9:00 pm | \$20 |
| May 8 | Tues. | ECC | Infant & Child Instructor: Kelie Willson | 6:30 – 9:00 pm | \$20 |
| May 14 | Mon. | ECC | Infant & Child Instructor: Greg Hilt | 6:30 – 9:00 pm | \$20 |
| May 23 | Wed. | ECC | Infant & Child Instructor: Greg Hilt | 6:30 – 9:00 pm | \$20 |
| June 7 | Thur. | ECC | Infant & Child Instructor: TBA | 6:30 – 9:00 pm | \$20 |
| June 11 | Mon. | ECC | Infant & Child Instructor: Greg Hilt | 6:30 – 9:00 pm | \$20 |
| June 25 | Mon. | ECC | Infant & Child Instructor: Greg Hilt | 6:30 – 9:00 pm | \$20 |

| First Aid in Early Childhood Settings <i>Pathways: First Aid</i> Participants will gain knowledge related to common childhood accidents and injuries in addition to receiving hands-on instruction that will enable caregivers to perform First Aid. | | | | | |
|--|--------|---------|---|----------------|-----|
| March 22 | Thurs. | ECC | Instructor: Autumn Gregory | 6:30 – 8:30 pm | \$5 |
| March 27 | Tues. | Sturgis | Instructor: Jennifer Nelson Sturgis Community Center | 6:30 – 8:30 pm | \$5 |
| April 2 | Mon. | ECC | Instructor: Deb Kuehn | 6:30 – 8:30 pm | \$5 |
| May 7 | Mon. | ECC | Instructor: Deb Kuehn | 6:30 – 8:30 pm | \$5 |
| June 4 | Mon. | ECC | Instructor: Deb Kuehn | 6:30 - 8:30 pm | \$5 |

Please Note:

We realize at times it is difficult to find childcare in the evenings. However it is not appropriate to bring children to classes at Early Childhood Connections. Our learning environment is not designed to ensure the safety of children. It is also important that we are respectful of fellow students and the instructor. Please make other arrangements for your children while attending classes at Early Childhood Connections. Thank you.

Early Childhood Connections Training Calendar

| Date | Day | Location | Class Description | Time | Cost |
|---|------|----------|--|----------------|------|
| Orientation Training | | | | | |
| This training is designed for persons or staff members who are new to the childcare field. | | | | | |
| April 4 | Wed. | ECC | <u>Intro to Child Care: Guidance (rescheduled from January 24, 2007)</u> Guidance and Behavior Management Instructor: Kim Booth <i>Pathways: Guidance and Behavior Management</i> | 6:30 – 8:30 pm | \$5 |

| Enrichment Training | | | | | |
|---|--------|-----|--|---------------------|----------------------------------|
| Mar. 19 | Mon. | ECC | <u>Newborn Only Car Seat Training</u> A certified technician will inspect your car seat to be sure it is appropriate, offer advice for positioning the newborn, and will help you get the car seat installed correctly in your vehicle. Instructor: Kathy Deml | 10:30 am – 12:00 pm | Free |
| Mar. 29 | Thurs. | ECC | <u>Preschool Block: Early Learning Guidelines-Social Studies</u> Social Studies allow children to learn about themselves in their family and community. Early Learning Guidelines to developmentally appropriate activities, environments, materials and parent communication and involvement. Demonstration classroom and plenty of activities will bring this material to life! Instructor: Kim Booth <i>Pathways: Age-Appropriate Planning</i> | 6:30 – 8:30 pm | \$5 |
| April 12 April 19 May 3 May 10 May 17 May 24 | Thurs. | ECC | <u>Social Emotional Foundation of Early Learning (Series Only)</u> This is a 6-week series focusing on promoting children's social and emotional development and addresses the challenging behaviors and mental health needs of children in childcare. Instructor: Tammy Arens Beauchamp and Kim Booth <i>Pathways: Guidance and Behavior Management</i> | 6:30 – 9:00 pm | \$30 for series and \$10 per CEU |
| April 16 | Mon. | ECC | <u>Newborn Only Car Seat Training</u> A certified technician will inspect your car seat to be sure it is appropriate, offer advice for positioning the newborn, and will help you get the car seat installed correctly in your vehicle. Instructor: Kathy Deml | 3:30 – 5:00 pm | Free |
| April 24 May 1 | Tues. | ECC | <u>Understanding Fetal Alcohol Spectrum Disorder (FASD) (Series Only)</u> This series will address the effects of Fetal Alcohol Spectrum Disorder in children, their experience, and practical ways for caretakers to address their needs. Instructor: Terri Murray <i>Pathways: Inclusion of All Children</i> | 6:30 – 9:00 pm | \$20 for series |
| May 21 | Mon. | ECC | <u>Newborn Only Car Seat Training</u> A certified technician will inspect your car seat to be sure it is appropriate, offer advice for positioning the newborn, and will help you get the car seat installed correctly in your vehicle. Instructor: Kathy Deml | 3:30 – 5:00 pm | Free |

| Bright Start Responsive Parenting Classes | | | | | |
|---|------|-----|---|----------------|--|
| April 4 April 11 April 18 April 25 May 2 May 9 | Wed. | ECC | <u>Bright Start Responsive Parenting Class</u> Responsive Parenting classes can increase the enjoyment and satisfaction of parenting young children. Parents will learn about topics such as social-emotional growth, early brain development, temperament and guidance. Instructor: Kathryn Kettering | 6:30 - 8:30 pm | No Charge Pre Registration Required |
| May 16 May 23 May 30 June 6 June 13 June 20 | Wed. | ECC | <u>Bright Start Responsive Parenting Class</u> Responsive Parenting classes can increase the enjoyment and satisfaction of parenting young children. Parents will learn about topics such as social-emotional growth, early brain development, temperament and guidance. Instructor: Kathryn Kettering | 6:30 - 8:30 pm | No Charge Pre Registration Required |

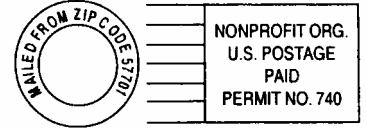
To Register Contact:
Early Childhood Connections (ECC)
 605-342-6464 - Toll Free 888-999-7759 - FAX 605-394-0153
 Email dhilt@rushmore.com or lawedde@rushmore.com

Early Childhood Connections Training Calendar

| Date | Day | Location | Class Description | Time | Cost |
|--|-------|-------------------|--|-----------------|---|
| Out of School Time (OST) – Certificate Training | | | | | |
| Instructor: Candy Kalil | | | | | |
| OST Certificate Series IV-Developing and Implementing Quality OST Programs, Part II | | | | | |
| Mar. 24 | Sat. | Kadoka Elementary | Module 13-Creating and Maintaining Safe OST Environments <i>Pathways: Program Safety</i> Module 14-Creating and Maintaining Healthy OST Environments <i>Pathways: Nutrition for Children</i> Module 15-Designing Effective Indoor OST Play and Learning Environments <i>Pathways: Learning Environments</i> | 8:00 am-4:00 pm | \$5 per class \$15 for CEU Teacher Renewal Credit |
| Apr. 3 | Tues. | ECC | Module 19-Involving School-Age Children in Activity Planning and Implementation <i>Pathways: Observing Children</i> | 6:30-9:00 pm | |
| Apr. 10 | Tues. | ECC | Module 20-Developing Activities that Encourage Creativity and Cognitive Development <i>Pathways: Age Appropriate Planning</i> | 6:30-9:00 pm | |
| Apr. 21 | Sat. | Kadoka Elementary | Module 16-Designing and Implementing Effective Indoor Interest Areas <i>Pathways: Learning Environments</i> Module 17-Developing and Implementing Effective OST Outdoor Environments and Interest Areas <i>Pathways: Learning Environments</i> Module 18-Exploring Effective Schedules, Diverse Activity Formats, Planning Tools and Staff Roles <i>Pathways: Program Management and Regulation</i> | 8:00 am-4:00 pm | |
| May 1 | Tues. | ECC | Module 21-Creating Successful Clubs in OST <i>Pathways: Guidance and Behavior Management</i> | 6:30-9:00 pm | |
| May 8 | Tues. | ECC | Module 22-Developing Activities that Support Character Development and Promote Social Interaction <i>Pathways: Guidance and Behavior Management</i> | 6:30-9:00 pm | |
| May 15 | Tues. | ECC | Module 23-Providing Homework Support <i>Pathways: Age Appropriate Planning</i> | 6:30-9:00 pm | |
| May 22 | Tues. | ECC | Module 24-Helping Children with ADD Succeed in OST Programs <i>Pathways: Guidance and Behavior Management</i> | 6:30-9:00 pm | |

| | | | | | |
|---|-------|-----|---|--------------|---|
| Out of School Time (OST) – Credential Training | | | | | |
| Instructor: Candy Kalil | | | | | |
| Series II – Leadership/Professionalism | | | | | |
| Apr. 17 | Tues. | ECC | Module 7-Growing as a Professional: Focus on Stress Management <i>Pathways: Professionalism</i> | 6:30-9:00 pm | \$5 per class \$15 for CEU Teacher Renewal Credit |
| Apr. 24 | Tues. | ECC | Module 8-Human Relations Skills Development: Focus on Leadership Styles and Conflict Management <i>Pathways: Professionalism</i> | 6:30-9:00 pm | |
| May 29 | Tues. | ECC | Module 9-Exploring Ethics in OST: Focus on a Professional Code of Ethics <i>Pathways: Professionalism</i> | 6:30-9:00 pm | |
| June 5 | Tues. | ECC | Module 10-Current Trends and Issues in OST <i>Pathways: Professionalism</i> | 6:30-9:00 pm | |
| June 12 | Tues. | ECC | Module 11-Youth Development Trends: Focus on Older Youth <i>Pathways: Child Growth and Development</i> | 6:30-9:00 pm | |
| June 19 | Tues. | ECC | Module 12-Creating Community Collaborations <i>Pathways: Program Management and Regulation</i> | 6:30-9:00 pm | |

Early Childhood Connections
809 South Street, Suite #304
Rapid City, SD 57701



ADDRESS SERVICE REQUESTED

We Say Goodbye to a Friend and Colleague

Our friend and colleague Carla Humphries died on February 18th ending her long battle with breast cancer. Many of you may know Carla from her work at Calvary Christian School where she was a preschool teacher or as a CDA student in our SDCDA program. Carla could light up the room even when we all knew she wasn't feeling well. Her passion for her work was an inspiration to us all. Carla was very persistent in her dream to get her CDA credential and came so very close when she needed to stop and focus on her health.

In mind and heart, Carla is an honorary CDA. She not only met but also exceeded the standards. She will be missed. Carla's family has established the Carla Jo Humphries Memorial Fund to benefit cancer patient's support and early childhood education charities. Donations can be sent to: Carla Jo Humphries Memorial Fund, Black Hills Federal Credit Union, PO Box 1420, Rapid City, SD, 57709